

# MALAMPA

# HFA Outcome Update

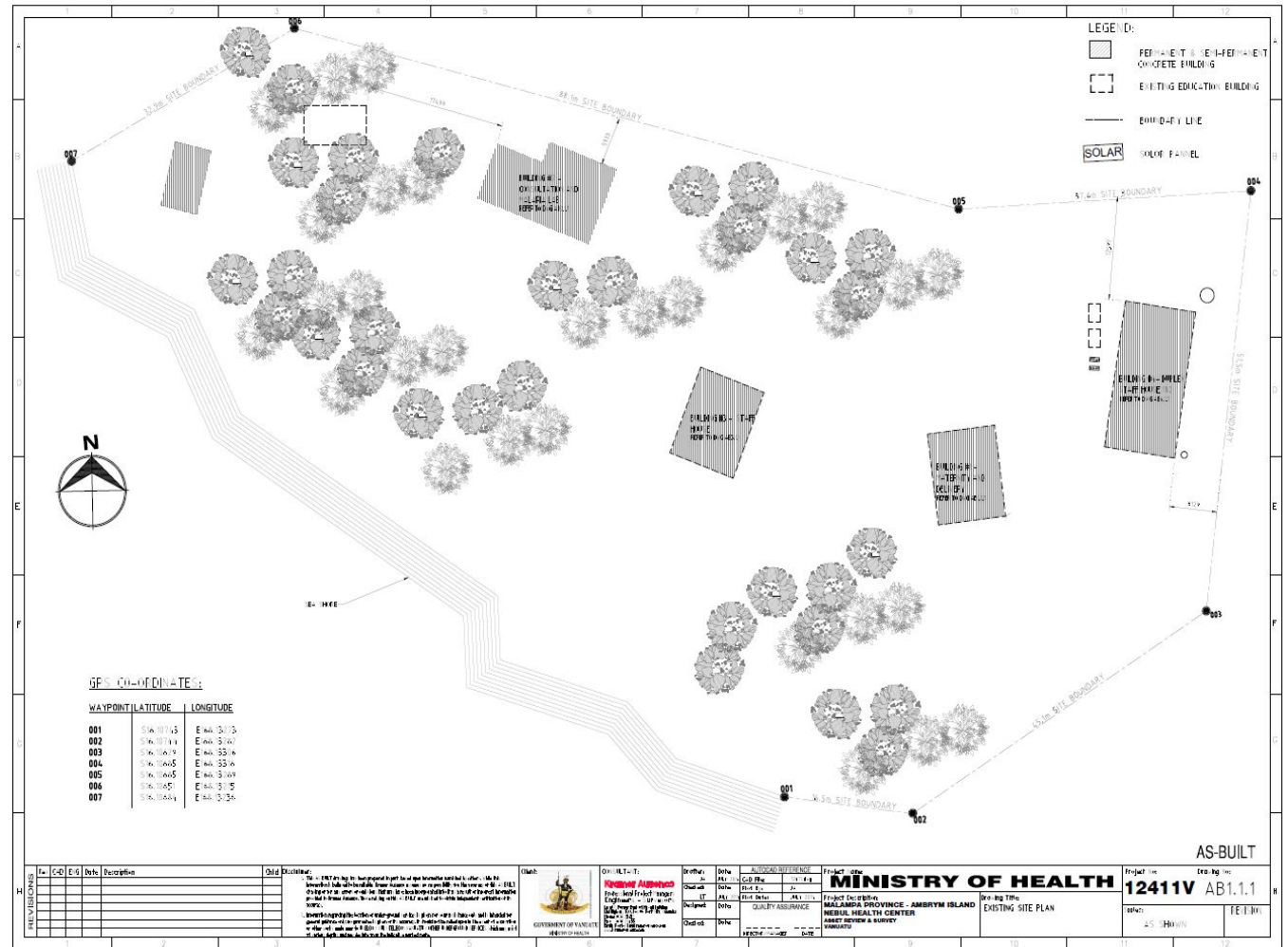
Until 29th of April

# Nebul Health centre



Realized Population	3130
Building	Severe
Equipment	Moderate
Medical Supplies	Moderate
WASH	Adequate water supply
Cold Chain	Available
Narrative	Solar system damaged + mattress, face mask, cardboard, pulse oximeter, nebulizer, stationary

# Nebul Health centre Site plan

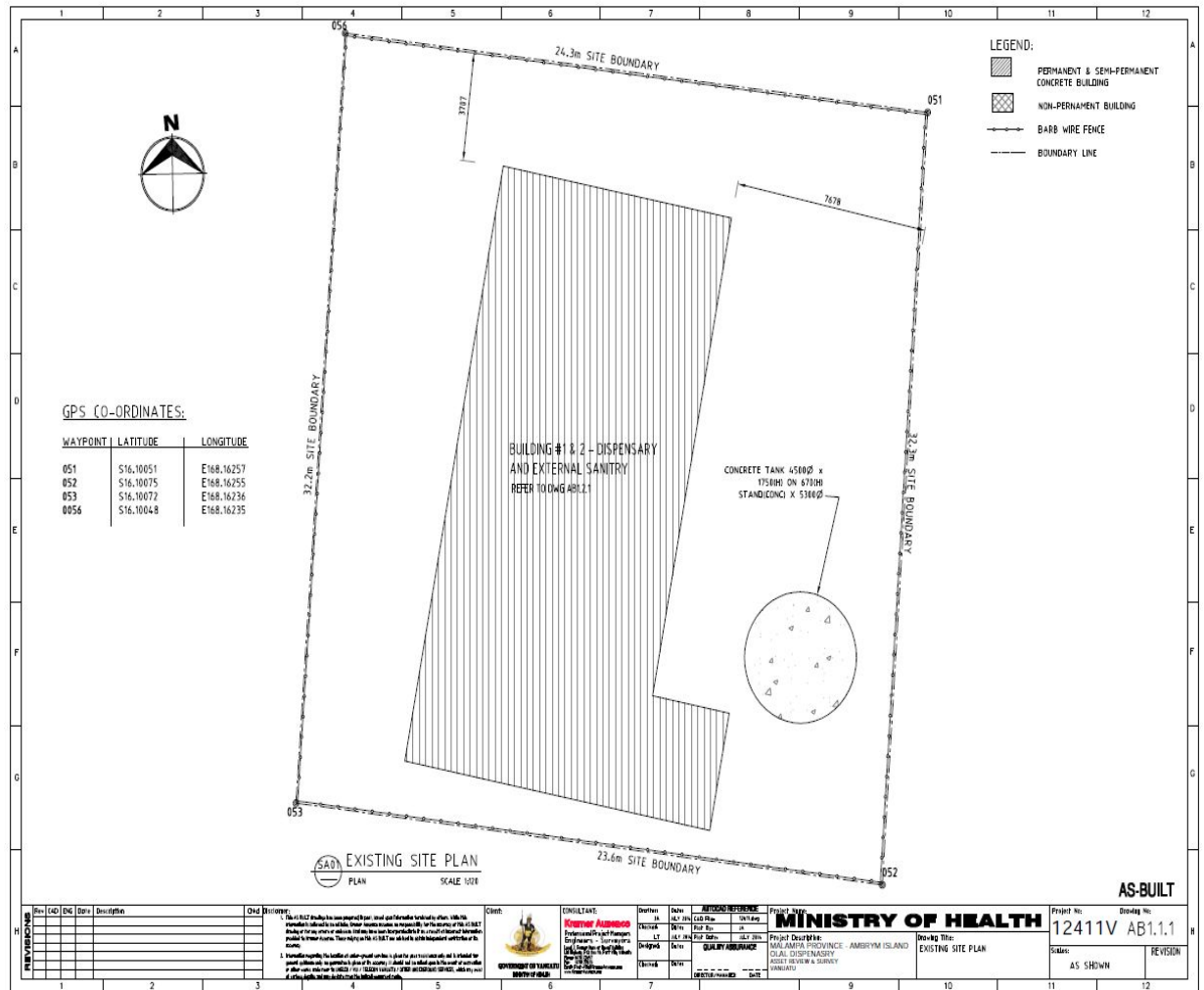


# Olal Dispensary



Realized Population	0
Building	Severe
Equipment	Severe
Medical Supplies	Severe
WASH	Insufficient water storage
Cold Chain	Unavailable
Narrative	Roofs severely damaged, roof removed, water damaged (inside facility), all power supply damaged.

# Olal Dispensary Site plan





# Port Vato Dispensary



Realized Population	0
Building	No damage
Equipment	No damage
Medical Supplies	Mild
WASH	Adequate water
Cold Chain	Available
Narrative	Staff toilet damaged. Major damage on dispensary tool shed. Nurse Aid house partly damaged.

# Port Vato Dispensary Site plan

