



# MAKING INCLUSION MEANINGFUL

A NEW WAY TO IMPROVE SANITATION AND HYGIENE FOR PEOPLE  
WITH DISABILITIES IN VANUATU

**ALLISON COLEMAN, ELLIS LEE**  
**WORLD VISION VANUATU**

## VANUATU 3RD HEALTH RESEARCH SYMPOSIUM

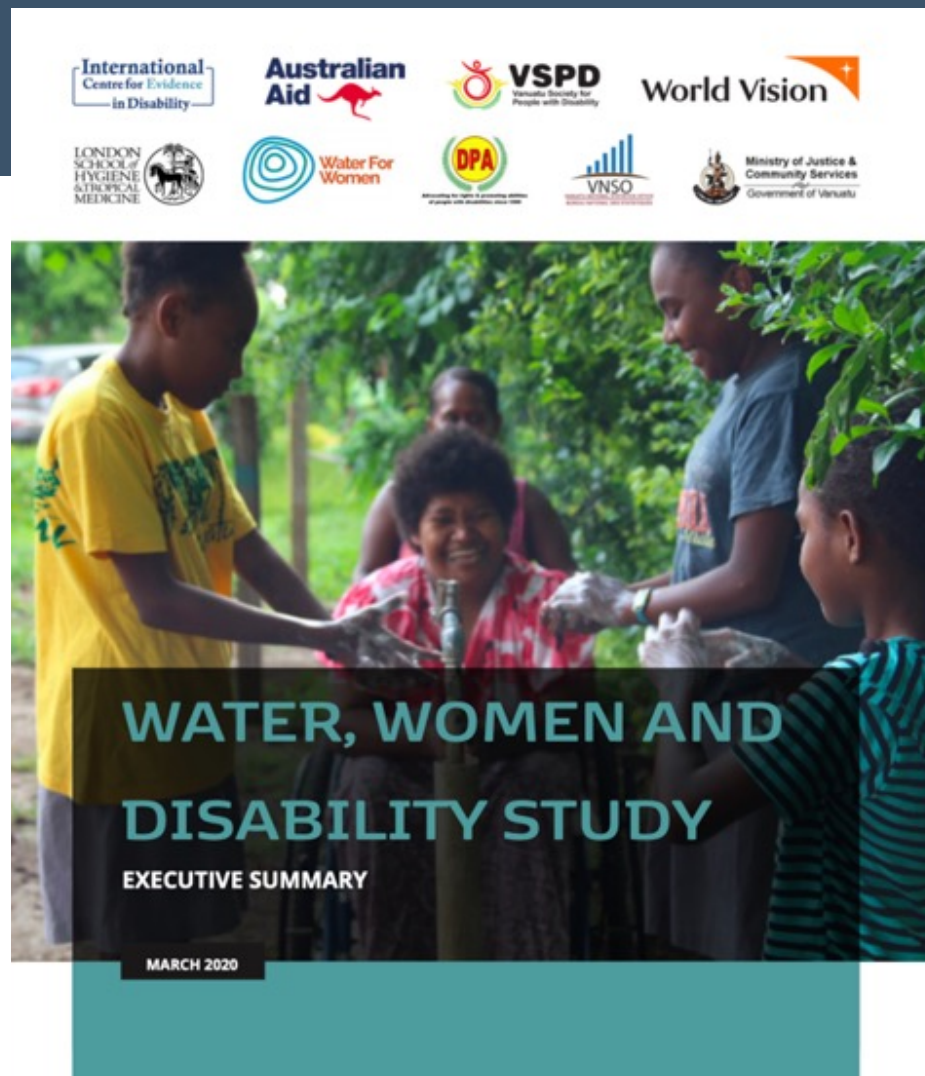
VNPF Conference Center, Luganville, Santo

26-28 October 2022



# BACKGROUND

- In 2019 World Vision Vanuatu undertook a large scale study of 56 402 individuals from 11 466 households to help us to better understand the challenges of accessing water and sanitation for people in the northern provinces of Vanuatu, with a particular focus on the experiences of women and people with disabilities



## Key Findings - Sanitation

- 45% of all households reported using a toilet that did not provide separation from human contact and human excreta (predominately rural areas)
- 32% of people with disabilities were unable to use a toilet without coming into direct contact with urine or feces





1 in 3 people  
with disabilities coming in  
contact with urine and  
feces every time they use  
the toilet



*I need a better way to be able to use the toilet*  
*Study Participant*





# INTRODUCTION



- Human-centered design approach to develop new Inclusive VIP Latrine to meet individual needs of each person with disability
- Pilot project to assess impact of new inclusive latrines
- 103 constructed across 18 communities in 4 area councils in Sanma province in 2020 -21

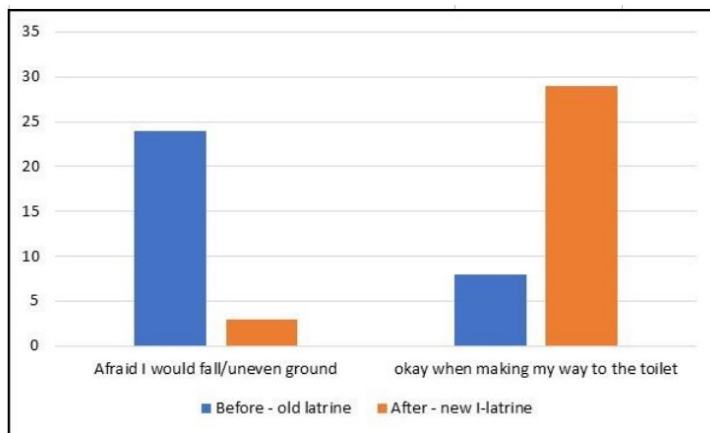
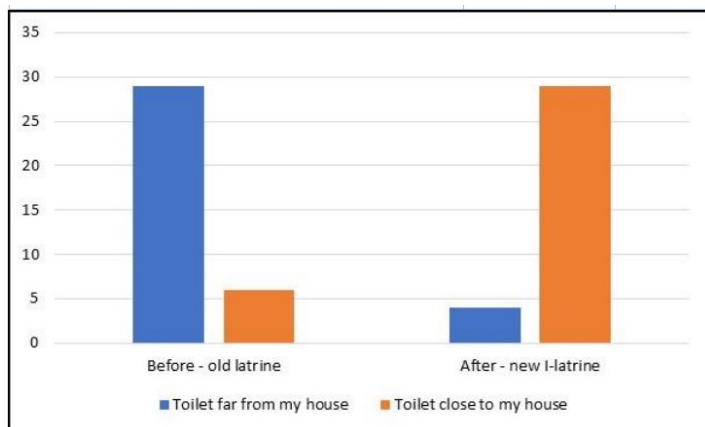


# METHOD



- Purposive sampling was applied to the project to identify 30 participants who were completed pre and post surveys with the project team
- Beneficiaries were a proportionate sample of pilot project and provided representative spread of age and gender balance, disability type and geographical location

# RESULTS



- Pilot Inclusive VIP Latrine project survey data indicated:
- Before the construction of the new Inclusive VIP Latrine, the majority of respondents struggled to access the toilet as it was located along way from their home and they had fear of injury due to uneven ground



Did the new Inclusive VIP Latrine  
improve ease of access for  
beneficiaries?





Although Lois lives in an urban area of Santo and has access to a wheelchair for mobility, she continues to face many challenges with safe and independent access to a sanitation facility at her home







- Lois is at high risk of injury from having to crawl on the rough ground over stones to go inside her toilet
- Nothing to sit on or hold onto



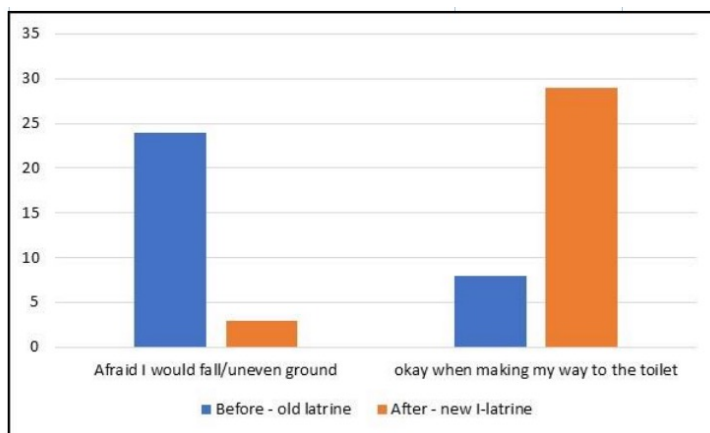
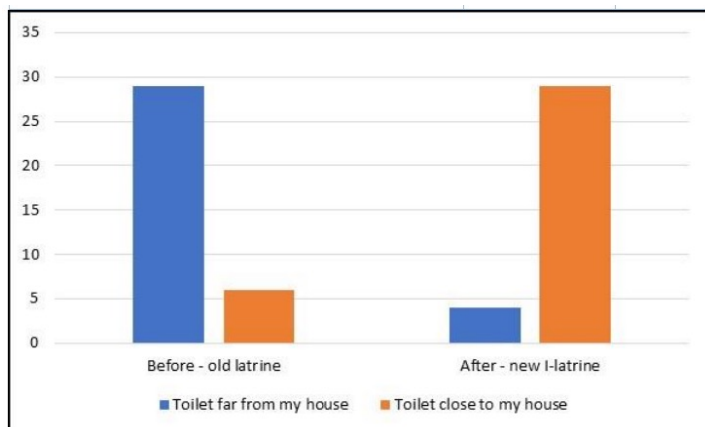


# RESULTS

- Closer to home
- Ramp access
- Level platform
- Increased space inside
- Door width
- Handle with lock
- Handrail



# RESULTS



- After the installation of the Pilot Inclusive VIP Latrine
- The number of toilets now located closer to people's homes had increased and participants reported increased confidence with being able to access their toilet without fear of injury from falling down on rough ground
- Overall 65% increase in ease of access







Did the new Inclusive VIP Latrine improve hygiene for beneficiaries?



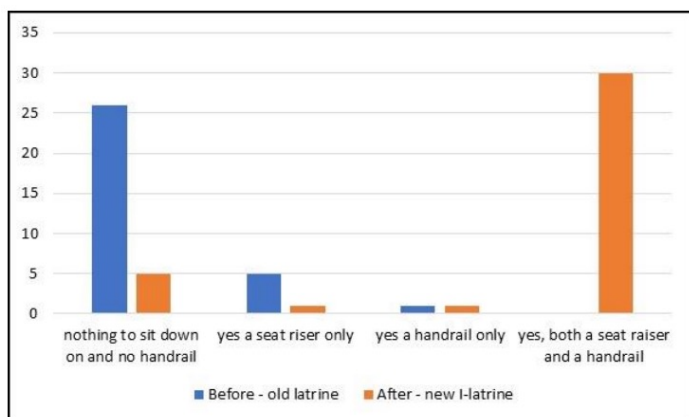
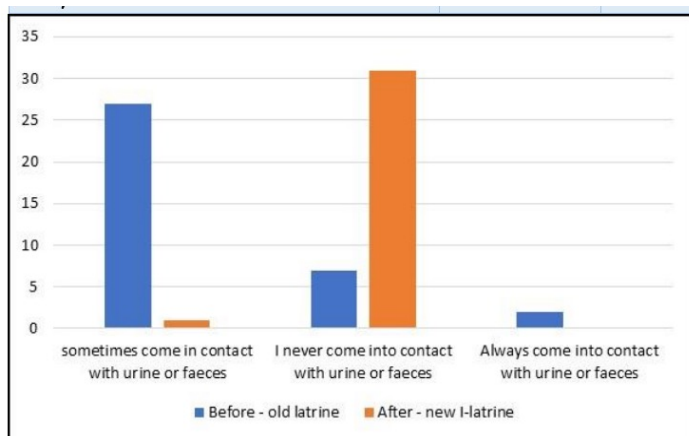


Rebecca





# RESULTS



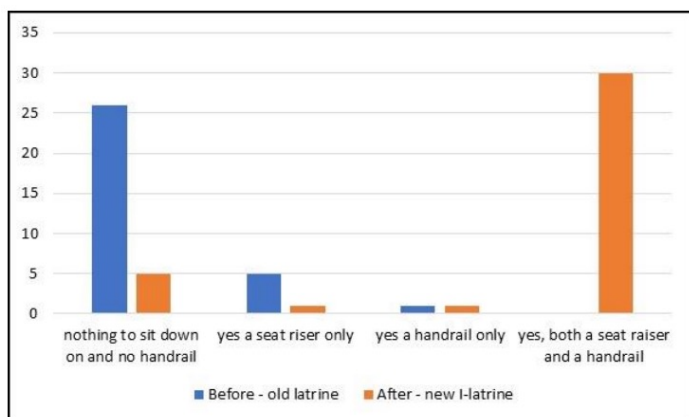
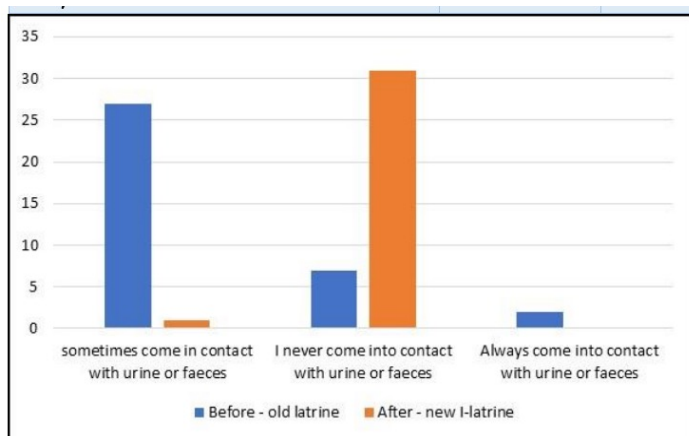
- Before construction of the new Inclusive VIP Latrine, the majority of participants reported coming into contact with urine and feces when accessing or using the toilet
- Strongly linked to the participants report of having nothing to sit down on or hold onto when using the toilet



Now Rebecca is  
able to use the  
toilet safely and  
independently  
whenever she  
wants



# RESULTS



- Provision of sturdy seat riser with handrails decreased the likelihood of coming into contact with urine and feces when using the toilet



# RESULTS



- Overall, The pilot VIP Latrine project demonstrated:
- 80% increase in improved hygiene (no longer coming into contact with urine and feces)
- 74% increase in safety and independence reported



## DISCUSSION / RECOMMENDATIONS



- Significantly improved the lives of users
- Reduced burden on family and caregivers
- Recommended to be included in the national sanitation guidelines for construction on Inclusive VIP Latrines

# ACKNOWLEDGEMENTS

- World Vision Vanuatu
- International Centre for Evidence in Disability
- London School of Hygiene and Tropical Medicine
- Vanuatu Society for People with Disability
- Vanuatu Disability Promotion and Advocacy Association.
- Vanuatu National Statistics Office
- Ministry of Justice and Community Services
- Sanma and Torba Provincial Government

